



Agnes Keith House

14 Museums throughout Sabah for you to explore!

[West Coast] 1) Sabah Museum, Kota Kinabalu; 2) Pogunon Community Museum, Penampang; 3) Sabah Islamic Civilization Museum, Kota Kinabalu. [Interior]: 4) Memorial of Mat Salleh, Tambunan; 5) Keningau Heritage Museum, Keningau; 6) Tenom Gallery, Tenom; 7) Lumuyu Rock Carving, Tomani; 8) Murut Cultural Museum, Pulong, Tenom. [East Coast]: 9) Sandakan Heritage Museum, Sandakan; 10) Tun Abdul Razak Memorial, Sandakan; 11) Agnes Keith House, Sandakan; 12) Museum of Agop Batu, Tulug, Kinabatangan; 13) Bukit Tengkorak Archaeological Site, Semporna; 14) Tun Sakaran Museum, Semporna.



JABATAN MUZIUM SABAH

Kompleks Muzium Sabah, Jalan Muzium, 88300 Kota Kinabalu, Sabah, Malaysia.

Tel: (+6088) 253 199, 225 033 Fax: (+6088) 240 230

Email: Muzium.Sabah@sabah.gov.my

*Sabah
Museum
guide*



G.C. Woolley

In 1947, George Cathcart Woolley, a Chartered Company administrator bequeathed his collection of photographs, diaries, ethnological artifacts and books (known as the Woolley Bequest) to the government of North Borneo. This collection became the inaugural anthology of the Sabah Museum in 1965.

VISITORS' AMENITIES & SERVICES: ■ Car park ■ Gift shop ■ Cafeteria ■ Multi-purpose room
 ■ Surau ■ Water dispenser ■ Vending machine ■ WiFi ■ Guided tour ■ Mobile exhibitions
 ■ AV equipment hire ■ Photograph reproduction ■ Talks-for-schools

PANDUAN DIRECTIONS

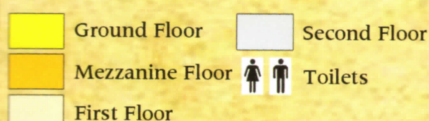
The Sabah Museum Complex is designed to give you a fulfilling experience in any order and direction. We suggest you begin your tour in the History Gallery and audio-visual theater on the first floor at the

Right Wing of the Marble Hall. You may then proceed to the Archaeology Gallery to explore prehistoric Borneo cave culture. Continue to the Natural History Gallery on the second floor and come face to face with Borneo animals such as Rhinoceros, pygmy elephant and orang utan. Discover the culture of Sabah at the Ethnography Gallery. Check out one of Malaysia's finest ceramic collections on the second floor. Trace the herb-lined trails around the ethno-botanical garden to see a plethora of ethnic medicinal and food plants. Visit traditional houses at the Heritage Village Phase I (12 traditional houses) & Phase II (15 traditional houses). When you are done, browse the museum shop and take a break at the cafeteria. Relax, discover, enjoy!

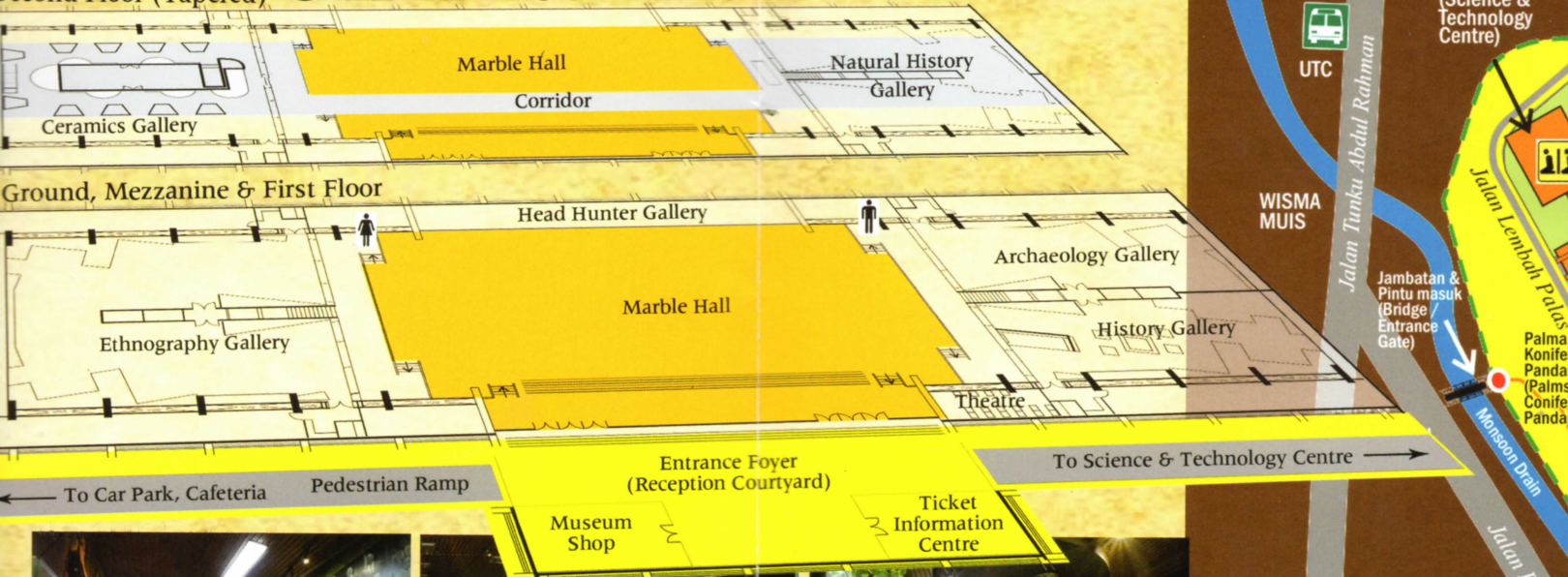
MAKLUMAT PELAWAT / GUEST INFO

Bayaran Masuk / Admission	Warganegara / Malaysian	RM 2.00
	Bukan warganegara / Non-Malaysian	RM 15.00
	Pelajar / Students in uniform*	Percuma / Free
	OKU / People with disability	Percuma / Free
	Warga emas / Senior citizen*	Percuma / Free
	Pemandu Teksi / Taxi Driver	Percuma / Free
Waktu dibuka / Opening hours		0900 hr - 1700 hr Setiap hari / Daily

* Warga Malaysia sahaja / Malaysian only

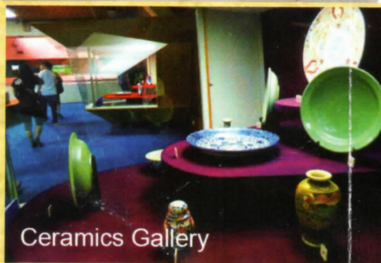
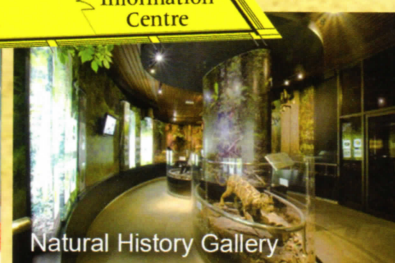
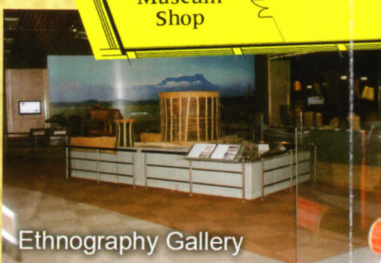


Second Floor (Tapered) GALLERY FLOOR PLAN



LEGEND

- Jalan Raya / Road
- Laluan Jalan Kaki / Trail
- Ethno-Botanical Garden
- Kampung Warisan / Heritage Village
- Kafeteria / Cafeteria
- Tandas / Toilet
- Kaunter Informasi / Information Counter
- Tempat Letak Kereta / Car Park
- Perhentian Bas / Bus Stop
- Surau / Prayer Room
- Kedai Muzium / Museum Shop
- Kaunter Tiket / Ticket Booth



Did You Know?

- 1) The Bryde's whale skeleton (18.6 m) at Sabah Museum is one of the largest whale skeleton exhibits in Malaysia.
- 2) Malaysia's oldest shipwreck (Sung Dynasty 960-1127 A.D) was found at the tip of Borneo.
- 3) Sabah has the most colorful and diverse culture in Malaysia with 32 indigenous groups and 100 spoken languages.
- 4) North Borneo (now Sabah) participated as a country in the 1956 Olympic Games in Melbourne, Australia.
- 5) Mansuli Valley at Lahad Datu dated 235,000 years ago is believed to be the earliest human civilization in Borneo.



Sabah Museum is a congenial place for everyone to enjoy a unique Bornean cultural and historical journey about Sabah.

Entrance Foyer

You can purchase your visit pass from the ticket booth at the entrance foyer. This reception area has rest benches and a vending machine in the doorway. From here, you can go directly to the Marble Hall, exhibition

galleries and audio-visual theater in the Main Building. Adjoining the patio is the information counter and museum shop. The multipurpose G. C. Woolley hall and restrooms are one deck below.

Marble Hall

The biggest whale skeleton exhibit in Malaysia (Malaysia Book of Records) measuring 18.6 meter sits centerpiece at this grand antechamber. Temporary exhibitions debut regularly at this atrium showcasing a selection of Sabah's historical and cultural anthology.

History Gallery

You can discover Sabah's history from early 12th century until its independence in 1963.

"Borneo 1935" (75 min) is Malaysia's first wildlife movie shot and produced by Martin and Osa Johnson along Kinabatangan River in 1935. Now showing daily at the AV Theatre.

An epic chronicle of maritime kingdom, sultans, rogue island chieftains, European conquests, white Rajahs, marauding pirates, incarcerated Christian captives, slaves trading, Spanish missionaries, British North Borneo Chartered Company, Japanese occupation, British colonialism, independence and the formation of Malaysia.

Pottery shards found in Bukit Tengkorak. During Neolithic period, Bukit Tengkorak in Semporna was the largest pottery making site in Southeast Asia with trade links reaching 3,500 km away.

"We can feel proud indeed of the way we have created Malaysia through friendly argument and compromise. The spirit of cooperation and concord is living proof of the desire we share for a common destiny. What other basis can there be, what finer augury for the future?" Tun Hj. Mohd. Fuad Stephens, 16/9/1963.

Don Carlos Quirion, the first Prefect Apostolic of Borneo, established the first Spanish capital at Sepanggar Bay in 1857.



The "Invincible Vest" with sacred Al-Quran verses embroidered on it was worn by followers of Mat Salleh to fight British forces between 1886 and 1900.

Archaeology Gallery

View artifacts excavated from 10,000-year old prehistoric Borneo cave dwellers. Century-old skeleton in traditional casket and burial jar. Prehistoric artifacts and tools made of stones, clay, shells, bones and wood from Mansuli Valley (at Lahad Datu), dating 235,000 years ago, believed to be the earliest human civilisation in Borneo.

2,000-year-old Vietnamese drum excavated from Bukit Timbang Dayang burial site in Banggi Island.

Headhunting Gallery

Centuries ago, the fearsome headhunters armed with machete and blowpipe hunted human heads as trophy. It was a symbol of bravery. You can see a collection of hundred-year-old (real) human skulls tied up together with silad leaves, the machete used to cut off heads and how they processed the heads.

Ethnography Gallery

This gallery introduces you to the custom and culture of all the 32 native tribes of Sabah. An entire first floor on the West Wing showcases a growing collection of Borneo antiquities and objects in modern use. Significant pieces include the Bequest from G. C. Woolley in 1947 which formed the inaugural anthology of Sabah Museum.

Kadazan woman from Papar in her traditional costume.





A Bryde's whale measuring
18.6 meter stranded at the
beach of Gaya Island on
17 December 2006.
Everyone tried to
rescue this whale
but it died
eventually.

Gayang,
a smaller
and thinner
musical
instrument
similar to gong
played
together
with
traditional drum.

Borneo's Tufted Ground
Squirrel aka Vampire Squirrel
has the world's fluffiest tail.

Skeleton of a
Sumatran
Rhinoceros.

Senduduk
flower

Daur Belalai Gajah
(Sabah Snake Grass)

Bamboo house

Hakka
woman
wearing a
"Liong mau".

Copper betel nut set
engraved with flora motifs.

Natural History Gallery

You will see specimens of different
flora and fauna from marine,
rainforest, swamp and cave
eco-systems. Here is your golden
opportunity to encounter some
rare and seldom seen animals
of Sabah that normally reveal
themselves only on hidden
camera trap in the wild. Come
face to face with a clouded leopard,
Borneo rhinoceros and the magnificent
wild fowl. You can also examine the

skeleton of an
18.6-meter
Bryde's
whale at the
Marble Hall.

Mat Salleh's sword -
surrendered to

William Clark Cowie, chairman of
North Borneo Chartered Company, in a symbolic
act acknowledging NBCC's rule and authority.

Ceramics Gallery

Ceramics were imported from China
during the Sung Dynasty (960-1278
A.D) and used for storage, wine-
brewing, dowry and burial for
more than a thousand years.
Sabah Museum has more
than 2,723 pieces of fine
ceramics, making it one
of the finest ceramic
collections in
Malaysia.

Tabu Dita - colorful
tall jar - is one of the
finest jars in Borneo.

Ethno-Botanical Garden

The grounds of the museum are
meticulously planted with a large
variety of herbs and plant life
endemic to Borneo including a
Montane Garden. This is a herbarium
(living ecosystem) of traditional
medicinal, ritual and food plants of
the ethnic people in Sabah. Walk the
trail and discover this green treasure.

Science and Technology Gallery

The Science and Technology
Centre houses three
exhibitions; oil and gas
production, broadcasting
and North Borneo
Railway in Sabah.

North Borneo Railway
No. 7 - Model H. Ralph Hone.

Heritage Village

You can access Heritage Village
(Phase 1) from the public parking
area. Various traditional houses
scattered across a village land-
scape of suspension bridge,
gazebo, fruit trees and sculptures.
You can see a wedding dais in a
Bajau house and jump on the
lansaran (rattan trampoline) in a
Murut longhouse. You can also
visit a Chinese farmhouse, Bonggi
house, bamboo house, Rungus
longhouse, Bisaya house, Lotud
house, Brunei house, Suluk
house, Iranun house and Lepa
Lepa boat house with fifteen
more to explore in
Heritage Village
Phase II.

Islamic Civilization Museum

This Islamic Civilization Museum
displays the Al-Quran, Islamic
ceramics, costumes, mosques in
Sabah, brass ware and an
extensive collection of betel nut
containers. It is only 15-minute-
walk away from the main
building. You can enter for free
with the same visit pass you have
purchased on the same day.

Islamic Civilization Museum

